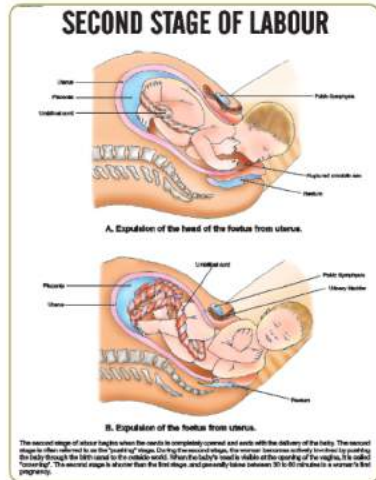
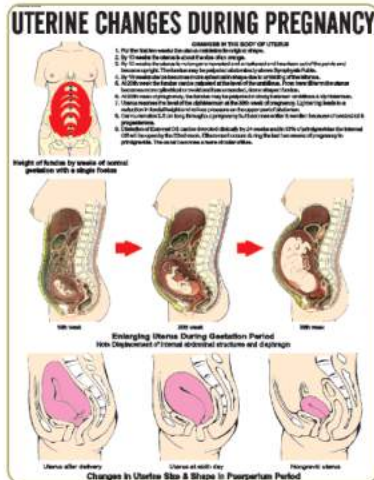
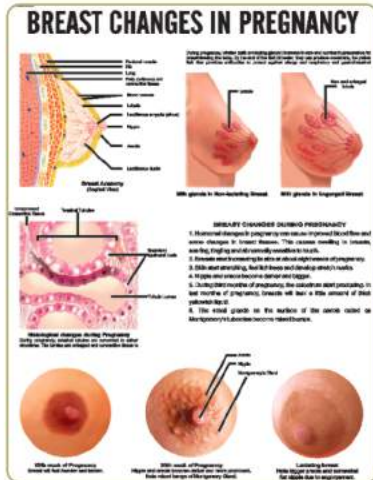


## MIDWIFERY & CHILD HEALTH NURSING CHARTS

Laminated & Fitted With Best Quality Plastic Rollers Or Rigid Chemical Lamination, Aluminium Frame with Markable Surface.

Size 51 x 66 cm. Set of 20 Charts.

- |   |   |
|---|---|
| <p>INC01 Breast Changes in Pregnancy<br/>                 INC02 Uterine Changes in Pregnancy<br/>                 INC03 First Stage of labour<br/>                 INC04 Second Stage of labour<br/>                 INC05 Third Stage of labour<br/>                 INC06 Complete Breech Presentation<br/>                 INC07 Incomplete Breech Presentation<br/>                 INC08 Foot Presentation<br/>                 INC09 Shoulder Presentation<br/>                 INC10 Face Presentation</p> | <p>INC11 Brow Presentation<br/>                 INC12 Twin Pregnancy<br/>                 INC13 Placenta Praevia<br/>                 INC14 Caput Succedaneum, Cephalhaematoma<br/>                 INC15 Congenital Malformation of New Born<br/>                 INC16 Cleft lip-Palate<br/>                 INC17 Spina Bifida<br/>                 INC18 Hydrocephalus<br/>                 INC19 Anencephalus<br/>                 INC20 Breast Self Examination</p> |
|---|---|



## IMPORTANT NURSING CHARTS

Laminated & Fitted With Best Quality Plastic Rollers Or Rigid Chemical Lamination, Aluminium Frame with Markable Surface.

Size 51 x 66 cm

- |   |  |
|---|--|
| <p>DMN001 Human Skeleton<br/>                 DMN002 Different Types of Joints<br/>                 DMN003 Different Types of Vertebra, Atlas<br/>                 DMN004 Different Types of Vertebra, Axis<br/>                 DMN005 Different Types of Vertebra, Cervical<br/>                 DMN006 Different Types of Vertebra, Thoracic<br/>                 DMN007 Different Types of Vertebra, Lumbar<br/>                 DMN008 Different Types of Arm Bones<br/>                 DMN009 Different Types of Bones, Scapula<br/>                 DMN010 The Pelvic Girdle<br/>                 DMN011 Different Types of Leg Bones<br/>                 DMN012 Human Hand &amp; Foot Bones<br/>                 DMN013 Ligaments of Spinal Column<br/>                 DMN014 Ligaments of Upper Limb<br/>                 DMN015 Ligaments of Lower Limb<br/>                 DMN016 Pelvic Ligaments<br/>                 DMN100 Dentition - Teeth Types</p> | <p>DMN101 Mammalian Skin V. S.<br/>                 DMN102 Trachea<br/>                 DMN103 Larynx<br/>                 DMN104 Oral Cavity<br/>                 DMN105 Stomach<br/>                 DMN106 Pancreas<br/>                 DMN107 Spleen<br/>                 DMN108 Small Intestine<br/>                 DMN109 Large Intestine<br/>                 DMN200 Blood Circulatory System<br/>                 DMN201 Reproductive System<br/>                 DMN400 CPR Infant<br/>                 DMN401 CPR Child<br/>                 DMN402 CPR Adult<br/>                 DMN700 Stages of Human Development<br/>                 DMN701 Cross Sectional Anatomy : Thoracic Vicera<br/>                 DMN702 Cross Sectional Anatomy : Abdominal Vicera<br/>                 DMN703 Cross Sectional Anatomy : Pelvic Vicera</p> |
|---|--|

