

**XC-332B Human Female Pelvis Section (4 Parts)**

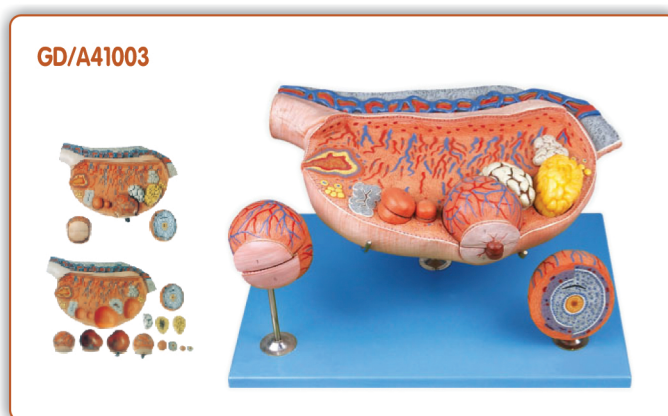
This model is a median section, showing female genital organs with bladder and rectum. The abdominal and pelvis muscles are shown detailed.

Made of PVC plastic.

**GD/A41003 Ovary Model**

This model consists of 8 parts, including ovary, primary ovarian follicles, secondary ovarian follicles, ovum, ovulation, ovum, corpus luteum, corpus albicans. It demonstrates the procedure of ovum's development. 10 positions are displayed.

Material: Advanced PVC and painted with imported paint.

**GD/A42010/1 Human Placenta**

The model shows the structure of placenta and the relation between placenta and umbilical cord.

7 positions are displayed.

Material: Advanced PVC and painted with imported paint.

**GD/A42004 Embryo**

The embryo model is of about 4 weeks old, and mounted on a stand. 12 positions are displayed.

Material: Advanced PVC and painted with imported paint.

